

Strong Roots SC: Addressing Social Drivers of Health

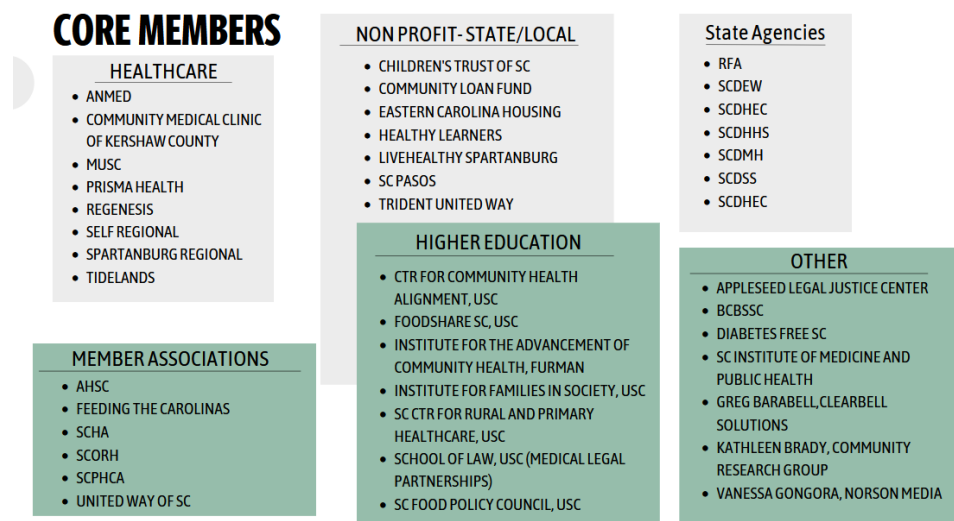
Strategic Illustration Description

BACKGROUND & FRAMEWORK

Coordinated by the Center for Applied Research and Evaluation (CARE) of the University of South Carolina, three cohorts of leaders—from healthcare, statewide and local non-profits, state agencies, member associations, higher education institutions, and other stakeholders came together to develop a collaborative approach to addressing Social Determinants of Health in the state (Figure 1). Beginning in the Winter 2021, the working groups (called Cores) met monthly to vision and identify priorities, goals, and action items to promote widespread systemic changes to improve the lives of South Carolinians.

As a part of this process, the Administrative, Programmatic, and Data Cores, in collaboration with CARE and consulting agency, A Visual Approach, developed a roadmap to reflect the decisions made

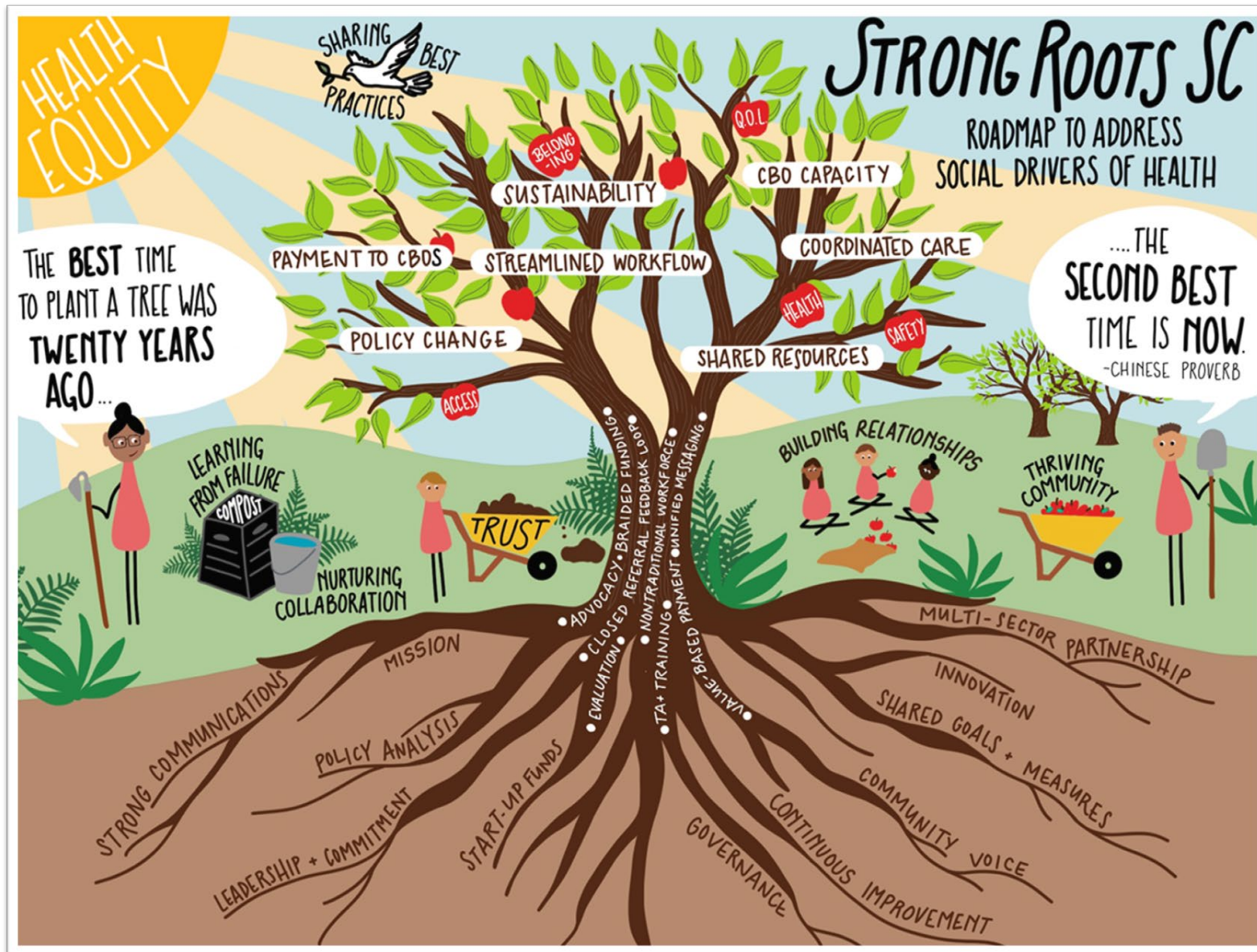
Figure 1. Organizational Representation of Core Members



and guide future priority setting; this roadmap is presented as an accessible, engaging, visually representative image entitled, *Strong Roots SC* (Figure 2)

Strong Roots SC is a visual framework for what is required to move the needle on social drivers of health across the state of South Carolina. The ecosystem of health in South Carolina includes organizations from the community; the private sector; state agencies; health systems; policymakers; and other stakeholders - all focused on the goal of improving health outcomes for South Carolinians through addressing the social drivers of health.

Figure 2. Visual Framework to Address Social Drivers of Health in SC



ROOTS

The roots of the tree reflect the critical infrastructure required to change health outcomes at a state level. These include an orientation towards the shared mission of addressing social drivers of health; shared goals and measures for all parties involved; start-up funding for pilot projects; innovation; multi-sectoral partnerships; inclusive governance; rigorous policy analysis; strong communication practices; continuous improvement; leadership and commitment to the work; and the continuous involvement of community voices.

The placement of each of these elements at the roots of the Strong Roots tree indicates that they were considered of foundational importance in the development of this visual framework.

Each of these elements rose to the top in many conversations, and each is considered vitally important for the success of this work.

TRUNK

At the trunk of the tree are elements that will be produced by the joining of each of the root-level components. Advocacy, braided funding, closed referral feedback loops, evaluation, TA and training, value-based payment, sustainment of nontraditional workforce, and unified messaging are **critical elements that will make the outcomes in the branches possible.**

BRANCHES

The branches of the tree indicate another level of outcomes. On top of the root infrastructure and strong trunk of the tree, the branches illustrate key outputs that enable the fruit of belonging, health, safety, access, and quality of life to be enjoyed equitably by all. The branches include policy change, fair payment to community-based organizations, streamlined workflows, capacity of community-based organizations, coordinated care, shared resources, and sustainability.

Each of these plays a key role in long-term outcomes and equitable impact.

FRUIT

The fruits of the tree represent the key impacts of this work on South Carolinians. The fruits include belonging, access, quality of life, health, and safety. **Every South Carolinian should have equitable access to each of these outcomes - a thriving community enjoying the fruits of a just society.**

ECOSYSTEM & PEOPLE

The tree is placed within a larger ecosystem, which represents the **human stewardship that will be required to truly change the landscape of social drivers of health in South Carolina.** Learning from failure, nurturing collaboration, trust, building relationships, and sharing best practices are critical to ensuring that the harvest of thriving communities will be shared equitably amongst all South Carolinians. The sun, representing health equity, is a warm and energizing presence for all work on social drivers of health across the state and is necessary for continued growth. With the involvement of community and the commitment of health sector leaders, the Strong Roots tree has the potential to create abundance and equity of health outcomes across the state.